

## Single & Double Arm Units



Thank you for purchasing the JFJ Disc Repair Machine.

We at JFJ are pleased to introduce to you the ultimate solution for scratched discs. We believe in keeping things as simple as possible for maximum results. The JFJ Disc Repair Machine is available in both a single arm unit, for repairing one disc at a time, as well as a double arm unit for repairing two discs at a time. For your convenience, each is made available for purchase in both 110V and 220V depending on the proper voltage for your area or county.

Our machines are compatible with all kinds of Compact Disc based products including: Music CDs, CD-Roms, Sony PlayStation, PSone and PlayStation 2 game discs, Microsoft X-box game discs, Nintendo GameCube game discs, DVD Movies, double-sided DVD, VCD, CDR, DVDR, XBX360, HD DVD, PSX 3, Blu-ray and future Compact Disc based products. In this Instruction Manual, any reference to a "CD" applies to all types of Compact Discs, such as music, games, movies etc.

Many people don't know that the information stored on a CD is actually on the top of the CD under the printed label. The bottom of the CD is merely a protective plastic or polycarbonate. It holds no actual CD information. What causes a CD to skip, pause or not load, is a scratch on the polycarbonate. This prevents a CD reader lens from properly reading the CD's information or data. By grinding and polishing the damaged layers of the protective plastic, you can make it possible for the CD reader lens to read the information or data clearly.

These instructions will give you general knowledge of using the JFJ Disc Repair Machine. When you have completed the cleaning procedure, there shouldn't be any scratches left behind. For beginners, some patience is needed as you become familiar with the type of scratches and the approximated depths of the scratches in order to take the right steps. This comes with experimenting with the first 10-15 CDs that you repair:

*Before starting, please check to see that the following items have been supplied:*

- SINGLE ARM**
- 2 White buffing pads
  - 1 Polish Compound #1 (Blue)
  - 1 Polish Compound #2 (White)
  - 1 Disc Plate
  - 2 Black Pads
  - 10 Pieces of Coarse Sandpaper
  - 10 Pieces of Soft Sandpaper
  - 1 Anti-Static Spray
  - 1 Cleaning Cloth Packck



- DOUBLE ARM**
- 4 White buffing pads
  - 2 Polish Compound #1 (Blue)
  - 2 Polish Compound #2 (White)
  - 2 Disc Plate
  - 2 Black Pads
  - 20 Pieces of Coarse Sandpaper
  - 10 Pieces of Soft Sandpaper
  - 1 Anti-Static Spray
  - 2 Cleaning Cloths Packs

*Beginners: We highly recommended that you start with CD's that do not require the coarse sandpaper, in order to familiarize yourself with the unit.*

14. Before turning on the machine make sure the door catch on the lid is securely placed inside the hole on the frame.

15. The motor inside the machine is silent; since it's new it is normal for the motor to make a slight grinding noise, this will go away after a few uses.

16. The frame or any of the other parts of the machine do not need to be cleaned on a regular basis. When there is too much build up of excess compound and residue it can be cleaned with a damp cloth.

17. As the buffing pad gradually wears down with use, the CD gets closer to the pocket. Replace the buffing pad before the CD touches the edge of the pocket. If the CD touches the edge, it will be ruined.

18. There are two ways you can apply the compounds to the white buffing pads. You can apply the compound to the pad before placing them into the machine or you can place the pad into the machine then apply the compound to the pad.

\*\*\*Gradually the white buffing pad wears down as you use it. It is normal for the center of the pad to remain while the rest of the pad wears down. It is not necessary to cut the center down with the pad.

19. We do not recommend the use of non-JFJ compounds with the JFJ Disc Repair machine. Many alternate compounds are hazardous to your health and contain chemicals that cause damage to the nervous system and produce temporary results that do not last.

20. When the machine is not in use, either take the pads out of the machine or leave the lid open. This will save the pad from being damaged from the pressure of the spring.

21. In order to save the title, on the title side of a double sided DVD, you need to trim the sandpaper, so the title does not get erased. Also the white buffing pad needs to be brand new.

22. When repairing music CD's make sure you pay attention to which side of the disc has been scratched. If you notice you are grinding the surface of the disc and the scratch is not being removed, it could be a reflection of a scratch that has developed on the top of your disc.

23. **WARNING:** If for any reason you need to open the lid while the machine is being operated, please turn the red button to "OFF". Otherwise the pad or your CD will be ruined. JFJ will not be responsible for any damages.

24. If the quality of your repaired disc does not look as good as new, please call us at 1-800-245-3675 or email us at [gametech@pacbell.net](mailto:gametech@pacbell.net) before any further use.

### DOUBLE ARM MACHINE:

1. The Double Arm Machine is designed to repair two CD's at the same time.

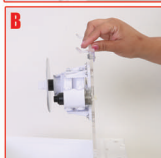
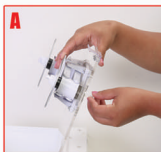
A) In case you want to repair one CD, you will need to press down the arm (closest to the timer) with your left hand, then with your right hand pass a plastic beige screw through the top of the Plexiglas where the hole is.

B) Make sure the plate and the nut are taken off after the screw has been tighten for the arm that is NOT being used (plastic beige screw will be provided to you).

2. When repairing Game Cube games or any other mini CD's, you need to purchase a smaller plate. You also need a different sanding pad and a shorter white buffing pad.

**NOTE:** Please do not use the sanding pad and the buffing pad that originally came with the machine, otherwise the pads will be ruined.

3. When repairing two CD's at the same time you must either do two regular size discs or two game cube discs. Using one of each will ruin your pad.



## MINOR SCRATCHES

Using our white buffing pad and polish #2 (white) together removes damaged layers at a slower pace. This is compared to fine sandpaper and will not leave swirl marks. Most of the time, it is the only step required to repair a CD, making our product easy to use.

\*Please refer to page 7 before repairing any Blu-Ray, Playstation 3 or Nintendo Game Cube Discs.

\*\*For Double Arm Machine operating instruction please refer to page 8.

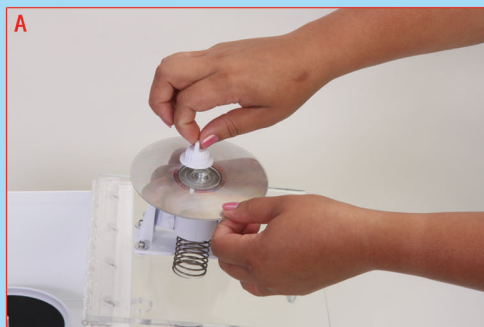
1. (A) Before mounting the disc onto the arm, unscrew the nut to remove and discard the white paper from the metal plate. Then place the label side of the disc against the metal plate. **Tighten the nut to the arm to secure the disc to the plate.**

2. (B) After the CD has been tightened; make sure there is no gap caused by debris or a misplacing of the disc. The CD should be flat across the surface of the plate.

3. Place the white buffing pad flat into the pocket, with no edges coming out.

4. (C) Open polish compound #2 (white) and place the tip on the white buffing pad. With the tip remaining on the pad, squeeze some compound out of the bottle. Spread it with the tip, over the top of the pad, never lifting the bottle. If you see the compound build up, smooth it with the tip of the bottle. This will keep the compound from splashing onto the frame.

5. **IMPORTANT:** Make sure you are putting polishing compounds #1 and #2 only on the white buffing pads. These pads are completely white with a black Velcro bottom. The sanding pads that you use for the soft and coarse sandpaper has a black foam center with Velcro on both sides. Only sandpaper goes on these pads.



## TIPS AND SUGGESTIONS FOR BEST RESULTS

1. To remove finger prints, dust and taking care of skipping, simply buff with the polish compound #1 (blue) for 20 seconds and then clean the residue off with the supplied cloth.

2. In order to pick up the CD, we suggest picking it up from the edge. Before placing a new disc on the arm, clean any compound from the plate that would prevent the disc from laying flat against the plate. All plates have a protective plastic shield; DO NOT remove it from the plate.

3. Occasionally the bottles may have trapped air inside. Simply turn the bottle upside down and gently squeeze the sides to release the trapped air.

4. When using the white pad with the white polish compound #2 for 1 minute increments, it is normal for the pad to wear down twice as fast when using the white pad with the blue polish compound #1.

5. If your polish compound #2 becomes watery, call the manufacturer and do not use. The white compound is a polish and will not return to its original state if shaken. However, if you experience separation with the Blue compound #1, shake the bottle until it returns to its original state. It is a wax and will do so when shaken.

6. If you experience uneven sanding while sanding your discs, flip the sanding pad over and try sanding with the other side of the pad. One side of the pad generates a better finish than the other.

7. The sanding pads and the buffing pads require no cleaning, do not wash them.

8. Our sandpaper requires no cleaning. To remove any build up, lightly tap the sandpaper against a hard surface.

**NOTE:** The time increments for using the soft sandpaper are for 10 and 20 seconds. For using the coarse sandpaper are for 10, 20 and 60 seconds.

9. It is normal to not get a perfect finish the first 2-3 repairs when using a brand new white buffing pad.

10. When repairing Game Cube games or any other mini CD's, you will need to purchase a smaller metal plate, shorter sanding pads (these have Velcro on one side and rubber on the other) and shorter white buffing pads (completely white with one side Velcro).

**NOTE:** Please do not use the sanding pads and the buffing pads that originally came with the machine, otherwise the pads will be ruined.

**TIP:** Since the Game Cube disc touches only the edge of the pad, add the polish compound #1 and #2 to the outer edge of the pad where the disc and the pad meet.

\*\*\*In order to change to the game cube plate, remove the nut, and then with a flat head screwdriver (not provided) unscrew the center screw to switch the plates.

11. Since the memory of the Playstation 3 games and Blu-Ray DVD discs are on the bottom, you will only be able to repair minor scratches with the buffing steps. For deeper scratches which would require the use of sandpaper, you will not be able to repair them because the memory will likely be ruined.

12. When using the white buffing pad for the first time, you need to use enough compound to cover most of the pad. It's important to reduce the amount of compound to 5-6 drops or 2 quarter size drops on opposite sides of the pad in order to get the best results. Use the tip of the bottle to smooth the compound onto the pads. The more discs you clean, the less compound you need to use since it absorbs some of the compound into the pad.

**TIP:** When increasing the buffing to 2 minute increments make sure you add a couple extra drops of compound to the pads. If the surface of the white buffing pad turns black or grey, more compound must be applied.

13. When you wipe off a CD, fold the supplied towel in half and then in thirds. After removing the disc from the unit, wipe it with the JFJ supplied towel in a circular motion from the inside out on both sides. Always apply a flat and even pressure to the disc.



## DEEP SCRATCHES

Our coarse sandpaper is used for severe scratches. If you can catch your fingernail in the scratch, then the coarse sandpaper is necessary to remove the scratch.

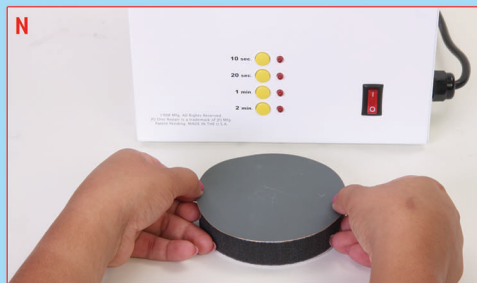
1. (M) Peel the backing off of the coarse sandpaper and (N) put it on the sanding pad, then close the lid. We recommend that you use a time range of 10 or 20 seconds, until you become familiar with the unit. After gaining experience you will be able to run CD's up to 60 seconds if required. The timer will stop when the set time finishes. Repeat the following steps if the scratches are not completely eliminated. The sandpaper is only supplied to you for special circumstances and will rarely be used. Since most of the discs do not have deep scratches, it is recommended to start with the soft sandpaper.

2. If the coarse sandpaper is used, you must (O) follow with the soft sandpaper. If the soft sandpaper hasn't been used more than 2-3 times then run the cycle for 10 seconds. On the other hand if the sandpaper has been used more than 2-3 times, you should extend the sanding for 20 seconds; otherwise some swirls will remain on the CD.

3. (P) Open polish compound #2 (white) and place the tip on the white pad. With the tip remaining on the pad, squeeze some compound out of the bottle onto the pad. Spread it with the tip over the top of the pad, never lifting the bottle. This will keep the compound from splashing on the frame. After sanding, the required time for buffing is only 1 minute.

4. Replace the white buffing pad and polish compound #2 (white) with the second buffing pad. Apply polish compound #1 (blue), without wiping off the white compound from the CD.

**⚠ CAUTION:** Please be aware that by using the coarse sandpaper continuously, the plate behind the CD will get warm. This will not damage your CD, however for your safety please be cautious when removing the CD.



## MINOR SCRATCHES

(D) After mounting the CD on to the arm, close the lid securing it to the machine. Before turning the machine on make sure the door catch is securely placed inside the hole on the frame.

6. (E) Push the button for the desired time, which in most cases is for 1 or 2 minutes. The machine won't stop until the cycle ends. Please wait until it shuts down automatically and then open the lid for the next step.

(F) **WARNING:** If for any reason you need to open the lid while the machine is being operated, please turn the red button to off. Otherwise the pads or your CD will get ruined. JFJ will not be responsible for any damages.

7. There are two available options for the next step.

**Option #1: (G)** For faster repair, remove CD and clean all the white polish off. Make sure that all the scratches are eliminated. Shake the spray bottle and then put one or two puffs of spray and clean the CD with the provided cloth in a circular motion.

**NOTE:** This step will be sufficient enough for your CD, but the quality of finish won't be as good as the second option.

**Option #2: (H)** After step #4 is done with the white buffing pad and the polish compound #2 (white), replace the buffing pad with the second white buffing pad. Apply polish compound #1 (blue) to the pad without wiping off the white compound from the CD. Close the lid and press the timer for 1 minute. When the machine stops, take the CD out and clean the excess compound from both sides of the CD.

**NOTE:** If you choose the second option, do not use the anti-static spray after using the blue polish compound #1.



## MEDIUM SCRATCHES

1. The soft sandpaper is made of a special cutting film which is used for normal scratches. It will be used for most of your discs. For beginners we recommend that you sand the CD for 10 seconds. This is required for most common scratches. After you gain experience with the machine, repeat this step if the scratches are not completely removed. Do not exceed more than 20 seconds while using the soft sandpaper.

2. (I) Peel the backing off of the soft sandpaper and place it on the center of the sanding pad. (J) To make sure that the sandpaper is secured to the sanding pad, gently press the sandpaper side of the pad against a flat surface. Place the sanding pad into the machine and close the lid securing it tightly to the machine.

3. Push the timer button for 10 or 20 seconds based on the condition of the CD.

**NOTE:** Open the lid and look at the pattern of the sandpaper. If you still see scratches on the CD, repeat the step until the scratches are eliminated.



## MEDIUM SCRATCHES

4. (K) Open polish compound #2 (white) and place the tip on the pad. With the tip remaining on the pad, squeeze some compound out of the bottle onto the pad. Spread it with the tip over the top of the pad, never lifting the bottle. This will keep the compound from splashing onto the frame. After sanding, the required time for buffing is only 1 minute.

5. After step #4 is done with the white buffing pad and polish compound #2, replace with the second buffing pad. (L) Apply polish compound #1 (blue) to the pad, without wiping off the white compound from the CD. Close the lid and press the timer for 1 minute. When the machine stops, take the CD out and clean the excess compound from both sides of the CD.

**ATTENTION:** If you are experiencing a ring that looks like a burn mark around the inner part of your disc after using a new white buffing pad, it is because the outer edge of the pad is dry. The ring may cause your disc not to load. Since the outer edge of the buffing pad touches the inner part of the disc apply some compound on both sides of the outer edge of the buffing pad. Smooth the compound with the tip of the bottle, and run the disc for a 1 minute cycle. Repeat with the blue polishing compound #1, using the second white buffing pad.

**NOTE:** Take the pads out of the machine when it's not in use to prevent damage to the pads caused from the pressure of the spring.

